

OPTIMIZE

Optimize workflow efficiency by eliminating extra steps and excess instrumentation

ENHANCE

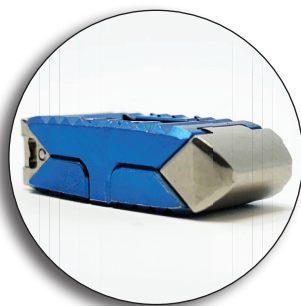
Enhance clinical outcomes with implants that expand to fit varying patient anatomies

MINIMIZE

Minimize tissue disruption and morbidity with a smaller incision

The AccelFix-XT expandable cage system for TLIF and PLIF helps restore disc height, segmental lordosis, and stability while offering a customized fit for the patient's unique anatomy

FEATURES



Low profile cage design and bullet tip facilitate MIS techniques

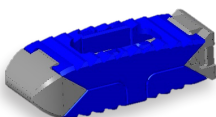
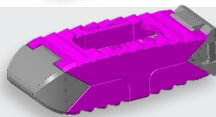


Sterile packaged implants help reduce surgical site infection (SSI) risk, eliminate back table clutter, and decrease hospital implant processing costs



Height indicator with torque-limiting handle provide controlled expansion, height confirmation, and help mitigate against over-distraction or endplate violation

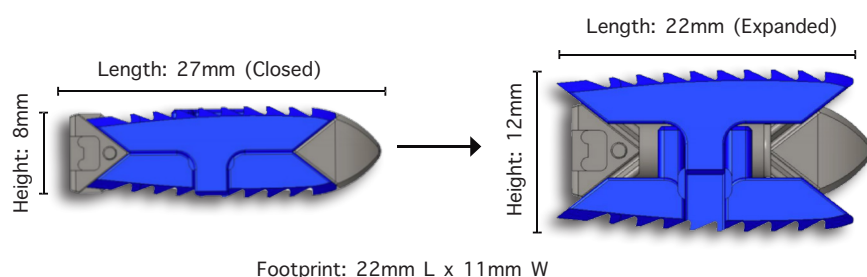
SPECIFICATIONS

| Color | Height | Length | Footprint | Lordosis θ |
|--|-----------|------------------------------|---------------------------|-------------------|
|  | 8mm-12mm | 27mm Closed 22mm Expanded | 11mm Width 22mm Length | 0°, 8°, 15° |
|  | 10mm-14mm | 28mm Closed 22mm Expanded | 11mm Width 22mm Length | 0°, 8°, 15° |

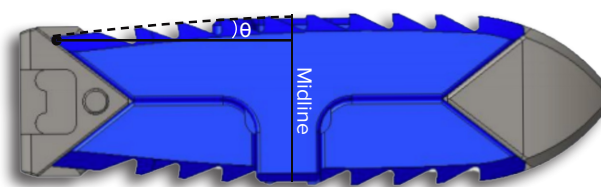
AccelFix-XT Specifications:

- Titanium alloy material
- Bulleted tip for ease of insertion
- 3 lordotic angles for each height option
- Reverse teeth to prevent migration

DIMENSIONS



Lordosis Measurement Point



Manufactured by L&K Biomed Co., LTD.
17F, 159-1, Mokdongseo-ro
Yangcheon-gu, Seoul, Korea

www.aegisspine.com

Distributed by Aegis Spine, Inc.

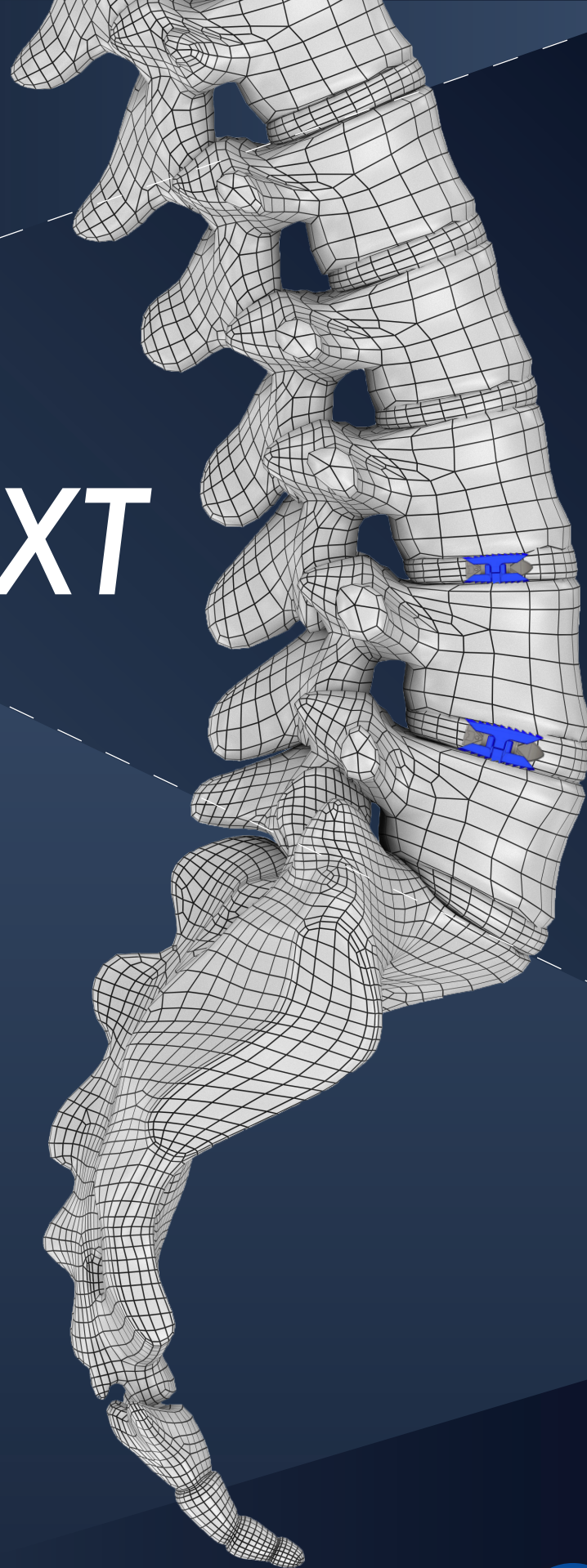
AEGIS SPINE



ACCELFIX-XT

Expandable Cage System

CREATE
STABILITY
RESTORE
BALANCE



L&K BIOMED

